



One Oasis

CEBU

My patch of **green** in the city.



We build the Filipino dream.

FILINVEST



My patch of **green** in the city.

Come home to a haven.



Your urban oasis takes the form of an Asian-Balinese-inspired community of mid-rise residential buildings set within a sprawling 3.7-hectare property at the heart of uptown Mabolo district in Cebu.

All plans, information and illustrations in this material are for identification and reference only. All details are subject to change without prior notice and do not form part of an offer or contract.

HOW TO GET THERE: Via F. Cabahug Road turn at P. Quirino St. (beside Sarrossa Hotel) then turn right at P. Magsaysay St. to reach **ONE OASIS MABOLO**.

Site is across the back of the Center for International Education and the Cebu Country Club.





My patch of **green** in the city.



SM City Cebu



Cebu Country Club



Cebu Business Park

You have the world at your fingertips because your home is a convenient distance from just about anything you will ever need.

- Enjoy a walk-to-work advantage because it is within five minutes driving distance from workplaces in Cebu Business Park and Asiatown IT Park.
- You are paces away from lifestyle hubs such as SM City Cebu and Ayala Center, as well as schools, hospitals, churches, hotels, and other major destinations.
- Located along Pres. Magsaysay Ext. in Bgy. Kasambagan, your home is highly accessible through public transport along F Cabahug Avenue.

Come home to an accessible getaway.



How to get there:

From Cebu Business Park, take F Cabahug St. going toward Mandaue. Turn left at Pres. Quirino St. then turn right at Pres. Magsaysay Ext. One Oasis Cebu is just across the back gate of Center for International Education.



My patch of **green** in the city.

Come home to a secure environment.



Relish the freedom to live, play, and pursue your passions without fear or worry. We have installed lofty perimeter walls and put in place a 24-hour security system because your well-being is our top priority.



FILINVEST
PLANNING DEPARTMENT

3rd Floor FDC Building, #173 P. Gomez Street, San Juan, Metro Manila
Tel. No. 727-4311 to 31

MASTER SITE DEVELOPMENT PLAN One Oasis Mabolo, Cebu

PROJECT NAME / LOCATION

The particulars, details and visuals shown herein are intended to give a general idea of the development and as such are not to be relied upon as statements of fact.

While such particulars and details are based on present plans which have been prepared with utmost care and are presented in good faith, buyers are invited to verify their factual correctness and subsequent changes, if any.

The contents herein are subject to change without prior notice and do not constitute part of an offer or contract.



We build the Filipino dream.

FILINVEST



My patch of **green** in the city.



Come home to resort-inspired amenities.



Be pampered to your heart's delight with a host of amenities that create for you and your family a world of recreation and leisure.

- Clubhouse and gazebo
- Adult and kiddie pools
- Basketball court
- Children's play area
- Jogging/walking paths

One Oasis
CEBU
My patch of green in the city.







My patch of **green** in the city.



Fairways 1

- 10-storey building facing the East that gives an unimpeded view of the fairways
- Features a lobby, a reception area, a basement parking, two building elevators, and a rooftop laundry crucible

Condominium Buildings Available

Choose your own oasis from one of these exciting Contemporary Asian-themed building developments:



Garden Suites 1

- Five-storey building situated near the property entrance
- Offers well-appointed studio units overlooking lush gardens
- Features a lobby, a reception area, a basement parking, an elevator, and a rooftop laundry crucible



Garden Suites 2

- Five-storey building situated near the property entrance
- Offers well-appointed 2-BR units overlooking lush gardens
- Features a lobby, a reception area, a basement parking, an elevator, and a rooftop laundry crucible



Delivered December 2010

06/08/2011 04:30 PM

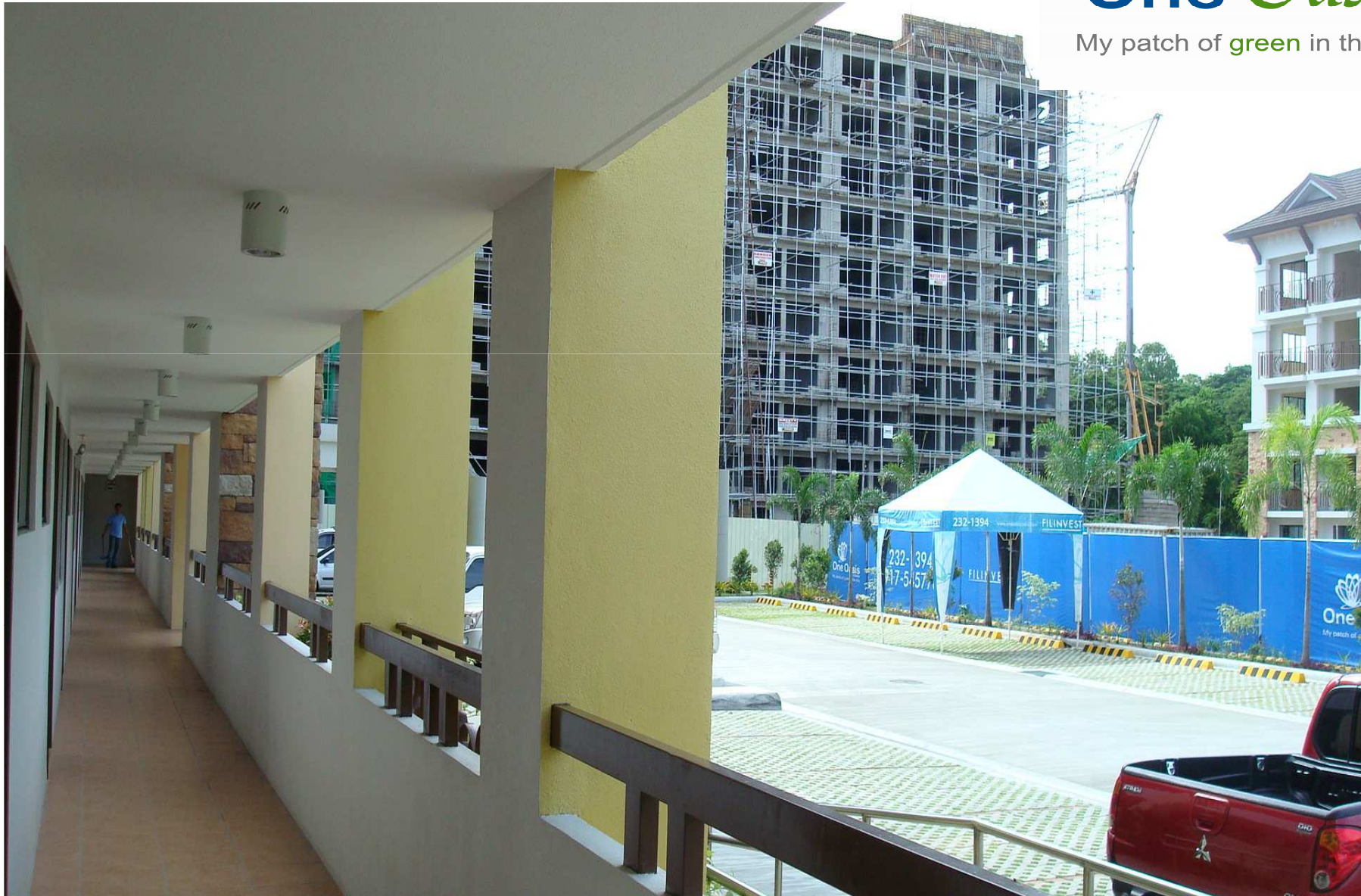
FILINVEST

Building 1 **Sold Out!**

Turn over December 2011



Building 3 **Delivery December 2012!**



GOLF COURSE

BUILDING 4

BUILDING 2

BUILDING 3
GROUND FLOOR

The particulars, details and visuals shown herein are intended to give a general idea of the project and as such are not to be relied upon as statements of fact. While such particulars and details are based on present plans which have been prepared with utmost care and are presented in good faith, buyers are invited to verify their factual correctness and subsequent changes, if any. The contents herein are subject to change without prior notice and do not constitute part of an offer or contract.

FILINVEST
INVEST ON SOLID GROUND

GOLF COURSE

BUILDING 4



BUILDING 2

BUILDING 3

TYPICAL SECOND TO NINTH FLOOR

The particulars, details and visuals shown herein are intended to give a general idea of the project and as such are not to be relied upon as statements of fact. While such particulars and details are based on present plans which have been prepared with utmost care and are presented in good faith, buyers are invited to verify their factual correctness and subsequent changes, if any. The contents herein are subject to change without prior notice and do not constitute part of an offer or contract.

FILINVEST
INVEST ON SOLID GROUND

GOLF COURSE

BUILDING 4

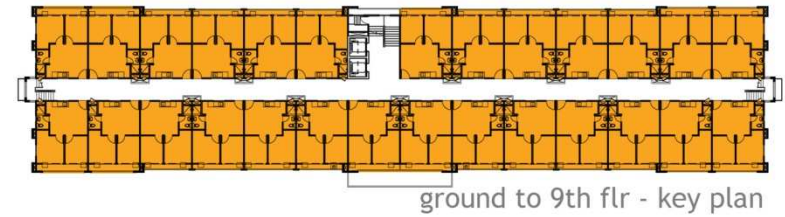


BUILDING 2

BUILDING 3
TENTH FLOOR

The particulars, details and visuals shown herein are intended to give a general idea of the project and as such are not to be relied upon as statements of fact. While such particulars and details are based on present plans which have been prepared with utmost care and are presented in good faith, buyers are invited to verify their factual correctness and subsequent changes, if any. The contents herein are subject to change without prior notice and do not constitute part of an offer or contract.

FILINVEST
INVEST ON SOLID GROUND



@ ground to 9th floor

2 BEDROOM UNIT

Living/Dining/Kitchen	15.57 sqm.
Bedroom 1	9.84 sqm.
Bedroom 2	7.50 sqm.
T&B	3.29 sqm.

total area **36.20 sqm.**
**balcony 1 (excluded)* 3.59 sqm.

FILINVEST

WE BUILD THE FILIPINO DREAM

These drawings are in accordance with present plans. The developer shall exert best efforts to conform with them but these may be subject to revisions and amendments without prior notice.

@ 2nd to 9th floor

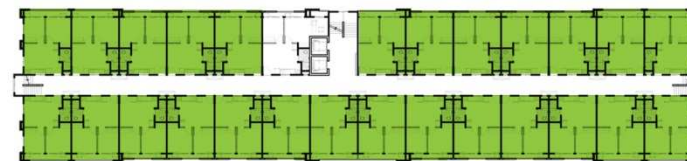
2 BEDROOM UNIT

Living/Dining/Kitchen	15.57 sqm.
Bedroom 1	9.84 sqm.
Bedroom 2	7.50 sqm.
T&B	3.29 sqm.

TOTAL AREA

*balcony 1 (excluded)

36.20 sqm.
3.59 sqm.



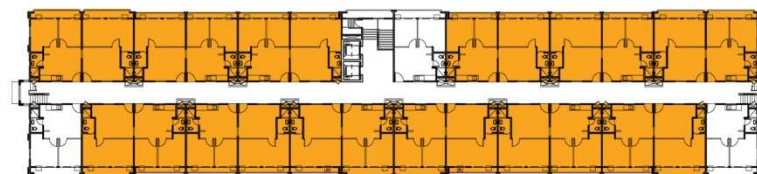
2nd to 9th flr - key plan




One Oasis
C E B U
My patch of green in the city.

FILINVEST
WE BUILD THE FILIPINO DREAM

These drawings are in accordance with present plans. The developer shall exert best efforts to conform with them but these may be subject to revisions and amendments without prior notice.



10th flr - key plan



@ 10th floor
3 BEDROOM UNIT

Living	15.57 sqm.
Dining/Kitchen	15.57 sqm.
Master's Bedroom	17.34 sqm.
Bedroom 1	9.84 sqm.
Bedroom 2	7.50 sqm.
T&B 1	3.29 sqm.
T&B 2	3.29 sqm.

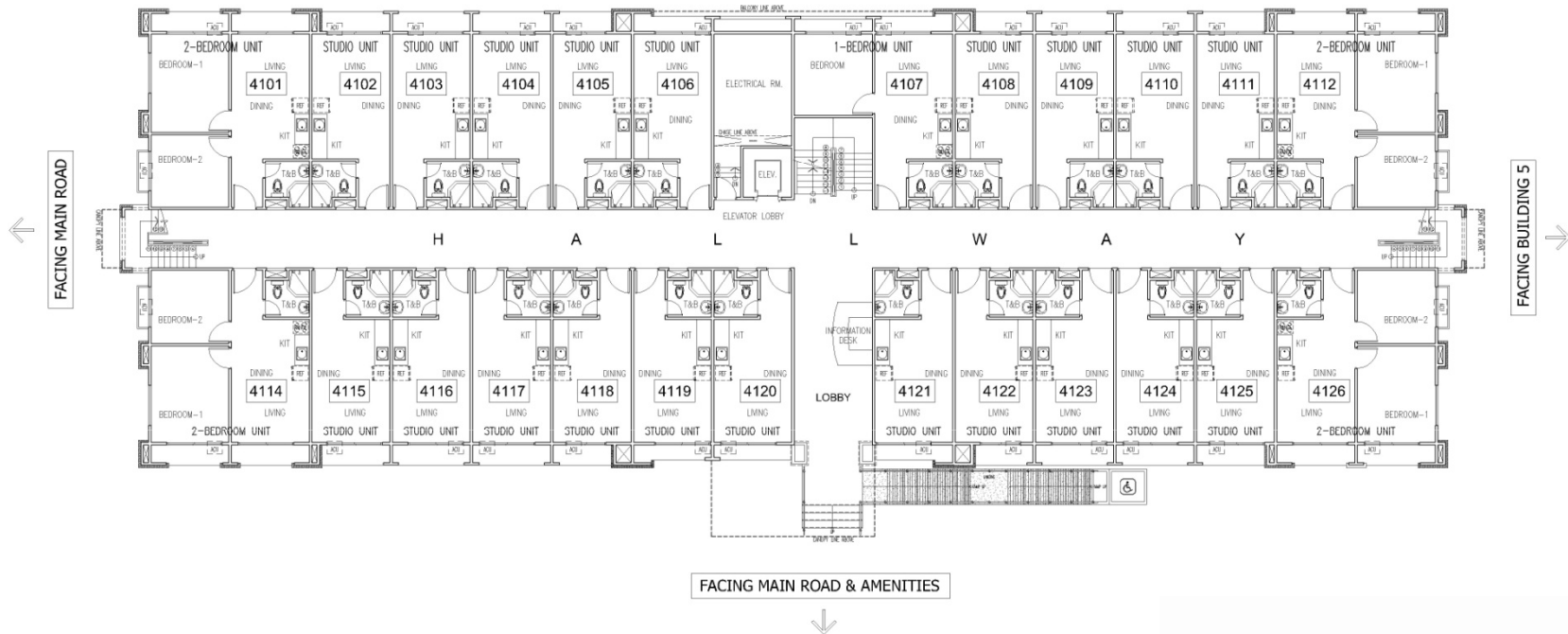
total area	72.40 sqm.
*balcony 1 (excluded)	3.51 sqm.
*balcony 2 (excluded)	3.58 sqm.



My patch of green in the city.

NEW INVENTORY

Building 4



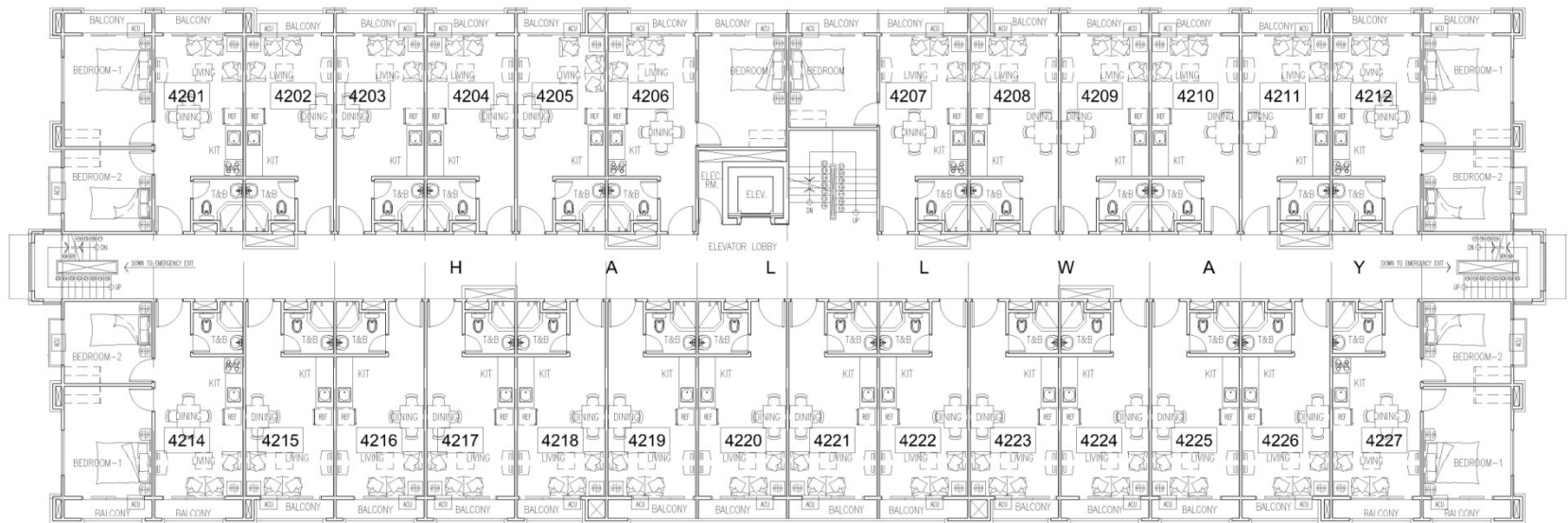
BUILDING - 4 GROUND FLOOR PLAN

FILINVEST
WE BUILD THE FILIPINO DREAM

These drawings are in accordance with present plans. The developer shall exert best efforts to conform with them but these may be subject to revisions and amendments without prior notice.


One Oasis
CEBU
My patch of green in the city.

Building 4



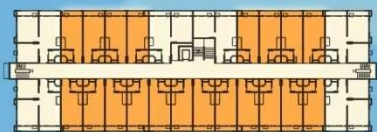
TYPICAL SECOND - FIFTH FLOOR PLAN



One Oasis

CEBU

My patch of green in the city.



Bldg. 4 - Key Plan



STUDIO UNIT

GROUND TO FIFTH FLOOR

Living/Dining/Kitchen	18.79 sqm.
T & B	3.23 sqm.

Total Floor Area	22.02 sqm.
-------------------------	-------------------

*excluded area	
Balcony	2.15 sqm.



These drawings are in accordance with present plans. The developer shall exert best efforts to conform with them but these may be subject to revisions and amendments without prior notice.

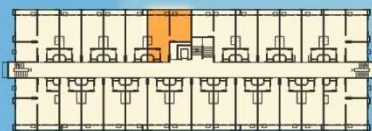
FILINVEST
WE BUILD THE FILIPINO DREAM



One Oasis

CEBU

My patch of green in the city.



Bldg. 4 - Key Plan



1 - BEDROOM UNIT

SECOND TO FIFTH FLOOR

Living/Dining/Kitchen	18.79 sqm.
Bedroom	12.88 sqm.
T&B	3.23 sqm.
Total Floor Area	34.90 sqm.

**excluded area*

Balcony 1	2.72 sqm.
Balcony 2	2.72 sqm.



These drawings are in accordance with present plans. The developer shall exert best efforts to conform with them but these may be subject to revisions and amendments without prior notice.

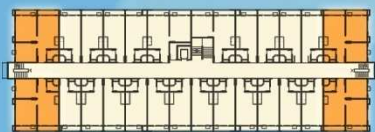
FILINVEST
WE BUILD THE FILIPINO DREAM



One Oasis

C E B U

My patch of green in the city.



Bldg. 4 - Key Plan



2 - BEDROOM UNIT

GROUND TO FIFTH FLOOR

Living/Dining/Kitchen	18.79 sqm.
Bedroom 1	13.28 sqm.
Bedroom 2	9.74 sqm.
T&B	3.23 sqm.

Total Floor Area 45.04 sqm.

*excluded area

Balcony 1	2.72 sqm.
Balcony 2	3.04 sqm.



These drawings are in accordance with present plans. The developer shall exert best efforts to conform with them but these may be subject to revisions and amendments without prior notice.

FILINVEST
WE BUILD THE FILIPINO DREAM



My patch of green in the city.

Unit Finishes

ITEM	DESCRIPTION
Floor	Vinyl tiles, vinyl planks (bedroom), ceramic tiles (toilet)
Wall	Painted concrete wall
Window	Clear glass on aluminum frame sliding window
Door	Panel door with mahogany finish
Toilet	Toilet lavatory, water closet, shower set
Kitchen	Kitchen sink with base cabinet

