



My patch of green in the city.

In today's fast paced world, we seek haven where we can rest – the refuge of a lush oasis to relax in as we leave the day's work behind.

Filinvest Land Inc., one of the country's top property developer offers **ONE OASIS MABOLO**, the newest medium rise residential building in Cebu. Surrounded by lush landscaped gardens this exclusive one hectare community offers a garden lifestyle amidst the city's stifling environment.



All plans and information shown are for announcement purposes only. All details are subject to change without prior notice.



One Oasis



All plans and information shown are for announcement purposes only. All details are subject to change without prior notice.

One Oasis Mabolo, Cebu: My patch of green in the city.

Conveniently located in the uptown district of Mabolo Cebu, One Oasis lets families enjoy a garden lifestyle amidst the city's stifling environment.

For starting families and foreigners the 2BR packages is the practical option as One Oasis is merely minutes away from schools, malls and their offices. Breathe and relax as this exclusive community offers resort inspired amenities, parks & playgrounds and 24 hour security making it perfect for residential living.

OFW's and Businessmen enjoy prime investment in the condo units thru its strategic location and unique development theme. Their own oasis when they visit Cebu for that much needed vacation or for an important business venture.

Contact us now and experience garden living in Cebu City.

Location : Mabolo City, Cebu

Theme : An exclusive resort inspired community highlighted by its Asian architectural theme and complimented with lush landscaped gardens.

Size : A secure three hectare development composed of nine residential buildings each five storey high. Your community is surrounded by an international school, the upscale district of Mabolo and the Cebu Golf and Country Club.

Product Offerings:

Building 2				
Unit type	Typical size(sqm)	Unit Features	Average Package price	Monthly payments
1 Bedroom	37.17	living area, toilet, kitchen, 1 bedroom, balcony	2,323,500	36,426
2 Bedrooms	38.38	living area, toilet, kitchen, two bedrooms	2,425,100	38,019

Building 1				
Unit type	Typical size(sqm)	Unit Features	Average Package price	Monthly payments
Studio Unit	26.10	living area, balcony, toilet, kitchen,	1,525,600	20,965
1 Bedroom	39.74	living area, toilet, kitchen, 1 bedroom with balcony	2,389,000	32,829
2 Bedrooms	52.80	living area, toilet, kitchen, two bedrooms, balcony	3,254,800	44,727

**Affordable monthly payments based on a 10years financing scheme.*

One Oasis – Mabolo, Cebu offers three product offerings suitable for your needs. Studio units tailor fit for bachelors and students of prominent universities of Cebu. One and two bedroom units perfect for your residential needs or for that prime property investment you've been looking for.

SPECIAL PAYMENT TERMS!

Features and Amenities:

- 24 Hour Security, Exclusive Entrance Gate and Perimeter Fence for the project
- Basketball Court, Childrens Play Ground
- Clubhouse with Swimming Pool
- Lush resort inspired landscaping
- Tree lined road and jogging trails

How to Get There:

Taking F. Cabahug Road turn at P. Quirino St, (Beside Sarrosa Hotel) then turn right at P. Magsaysay St. to reach One Oasis Mabolo. Site is across the back of the Center for International Education.

Proximity to key establishments:

Travel time from One Oasis - Mabolo Cebu

- Mactan International Airport - 30 minutes
- SM City Cebu - 10 minutes
- Ayala Center - 10 minutes
- IT Park - 10 minutes
- Paseo Commercial Center - 3 minutes
- Mabolo Church - 10 minutes
- Cebu Golf & Country Club - 6 minutes
- Center for International Education - 1 minute (right across)





it

FIL

These drawings are best efforts to conform with amendments with

FILINVEST
INVEST ON SOLID GROUND

These drawings are in accordance with present plans. The developer shall exert best efforts to conform with them but these may be subject to revisions and amendments without prior notice.

ONE OASIS - MABOLO, CEBU CITY
SITE DEVELOPMENT PLAN

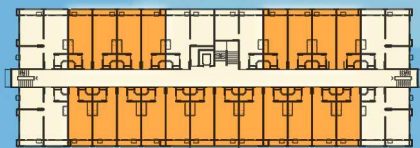




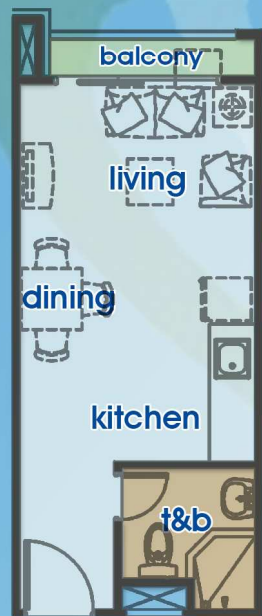
One Oasis

CEBU

My patch of green in the city.



Bldg. 1 - Key Plan



STUDIO UNIT

GROUND TO FIFTH FLOOR

Living/Dining/Kitchen	18.79 sqm.
T & B	3.23 sqm.

Total Floor Area	22.02 sqm.
-------------------------	-------------------

*excluded area Balcony	2.15 sqm.
---------------------------	-----------



These drawings are in accordance with present plans. The developer shall exert best efforts to conform with them but these may be subject to revisions and amendments without prior notice.

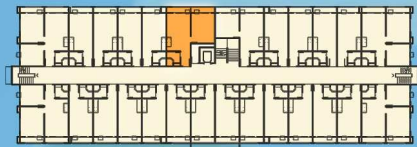
FILINVEST
WE BUILD THE FILIPINO DREAM



One Oasis

C E B U

My patch of green in the city.



Bldg. 1 - Key Plan



1 - BEDROOM UNIT

SECOND TO FIFTH FLOOR

Living/Dining/Kitchen	18.79 sqm.
Bedroom	12.88 sqm.
T&B	3.23 sqm.
Total Floor Area	34.90 sqm.

**excluded area*

Balcony 1	2.72 sqm.
Balcony 2	2.72 sqm.



These drawings are in accordance with present plans. The developer shall exert best efforts to conform with them but these may be subject to revisions and amendments without prior notice.

FILINVEST
WE BUILD THE FILIPINO DREAM



One Oasis

C E B U

My patch of green in the city.



Bldg. 1 - Key Plan



1 - BEDROOM UNIT

GROUND TO FIFTH FLOOR

Living/Dining/Kitchen	18.79 sqm.
Bedroom	10.64 sqm.
T&B	3.23 sqm.

Total Floor Area 32.66 sqm.

**excluded area*

Balcony 1	2.72 sqm.
Balcony 2	2.72 sqm.



These drawings are in accordance with present plans. The developer shall exert best efforts to conform with them but these may be subject to revisions and amendments without prior notice.

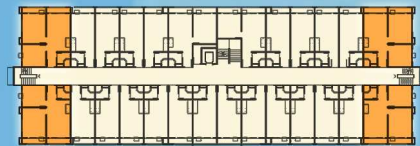
FILINVEST
WE BUILD THE FILIPINO DREAM



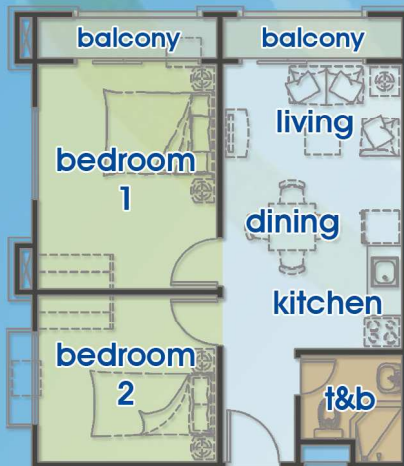
One Oasis

CEBU

My patch of green in the city.



Bldg. 1 - Key Plan



2 - BEDROOM UNIT

GROUND TO FIFTH FLOOR

Living/Dining/Kitchen	18.79 sqm.
Bedroom 1	13.28 sqm.
Bedroom 2	9.74 sqm.
T&B	3.23 sqm.

Total Floor Area 45.04 sqm.

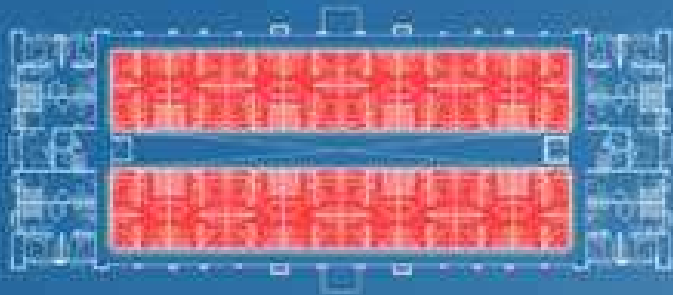
**excluded area*

Balcony 1	2.72 sqm.
Balcony 2	3.04 sqm.



These drawings are in accordance with present plans. The developer shall exert best efforts to conform with them but these may be subject to revisions and amendments without prior notice.

FILINVEST
WE BUILD THE FILIPINO DREAM



2 - Bedroom Unit-B

Living/Dining	14.92 sqm.
Bedroom 1	9.00 sqm.
Bedroom 2	7.875 sqm.
Kitchen	3.66 sqm.
T & B	2.92 sqm.

Total Floor Area 38.375 sqm.

*excluded area
Ledge

1.50 sqm.



These drawings are in accordance with present plans. The developer shall exert best efforts to conform with them but these may be subject to revisions and amendments without prior notice.

FILINVEST
INVEST ON SOLID GROUND